

SHINSEI MARU KS-17-J08C Bottle Sampling Water Chemical Analysis

Last Modified: 2020-11-10

[ReadMe](#) [Observation Data](#) [Data Format](#) [Quality Information](#)

Cruise ID: [KS-17-J08C](#)

Bottle Sampling Water Chemical Analysis: Processed (PI)

Data Policy: [JAMSTEC](#)

Observation Items: Temperature, Practical salinity, Transmittance, Dissolved oxygen, Silicate, Nitrate, Nitrite, Phosphate, Ammonia, Alkalinity, Dissolved Inorganic Carbon, Dissolved Organic Carbon, LTA, Total Dissolved Nitrogen, 18O

Science Keywords:

OCEANS > OCEAN CHEMISTRY > AMMONIA
OCEANS > OCEAN CHEMISTRY > INORGANIC CARBON
OCEANS > OCEAN CHEMISTRY > NITRATE
OCEANS > OCEAN CHEMISTRY > NUTRIENTS
OCEANS > OCEAN CHEMISTRY > OXYGEN
OCEANS > OCEAN CHEMISTRY > PHOSPHATE
OCEANS > OCEAN CHEMISTRY > SILICATE
OCEANS > OCEAN CHEMISTRY > SALINITY
OCEANS > OCEAN TEMPERATURE > WATER TEMPERATURE
OCEANS > SALINITY/DENSITY > SALINITY
OCEANS > OCEAN CHEMISTRY > ALKALINITY
OCEANS > OCEAN CHEMISTRY > CARBON
OCEANS > OCEAN CHEMISTRY > STABLE ISOTOPES

Cruise Report

http://www.godac.jamstec.go.jp/catalog/data/doc_catalog/media/KS-17-J08C_all.pdf

For Using Data

Principal Investigator

Masahide Wakita (JAMSTEC)

Use Constraints

See [Terms and Conditions](#) about constrain of use.

Data Citation

See [Terms and Conditions](#) about data citation.

Data Citation

Please contact PI (Masahide Wakita :mwakita@jamstec.go.jp)

Information on CTD data

Pressure sensor

Model : SBE 9plus, Sea-Bird Electronics, Inc.
Measurement range : 0 to 10500 m
Accuracy : $\pm 0.015\%$ of full scale range
Resolution : 0.001% of full scale

Temperature sensor

Model : SBE 3plus, Sea-Bird Electronics, Inc.
Measurement range : -5 to +35 °C
Accuracy : ± 0.001 °C
Resolution : 0.0002 °C

Salinity sensor

Model : SBE 4C, Sea-Bird Electronics, Inc.
Measurement range : 0 to 7 S/m
Accuracy : ± 0.0003 S/m
Resolution : 0.00004 S/m

Transmissometer

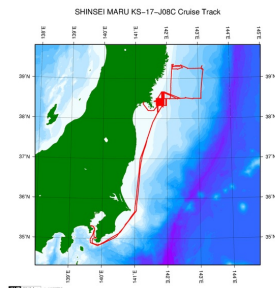
Model : C-Star, WET Labs, Inc.
Linearity : 99% R²

Information on Chemical and Biological data

Dissolved Oxygen

Instruments : Burette: EBU-610/APB-620 manufactured by Kyoto Electronic Co. Ltd. /10 cm³ of titration vessel
Detector and Software: Automatic photometric titrator DOT-05 manufactured by Kimoto Electronic Co. Ltd
Methods : Winkler titration method
Precision : 0.22 $\mu\text{mol kg}^{-1}$ (Replicate samples)
Reference Material/Calibration : -

Related Information



[Enlarge Image](#)

KS-17-J08C

Ship Name: SHINSEI MARU
 Period: 2017-05-28 - 2017-06-15
 Chief Scientist: Shuichi Watanabe (JAMSTEC)
 Project Name: [Tohoku Ecosystem-Associated Marine Sciences (TEAMS)]
 Proposal Researches on marine ecosystem dynamics in the Tsunami affected area off Sanriku
 Title:

Update History

2020-11-10	An observation data was registerd.
2018-05-10	An observation data was registerd.
2018-03-31	An observation data was registerd.

JAMSTEC

[Site Policy](#)
[Privacy Policy](#)
[Application for Data and Samples](#)
[Data Policy](#)

What's New
[Update History](#)
[Feeds](#)

Lists

[Publication List](#)
[Amount of Public Info.](#)

Data

[Map Search](#)
[Data Tree](#)
[Detailed Search](#)

Information of the Ships

[NATSUSHIMA](#)
[KAIYO](#)
[YOKOSUKA](#)
[MIRAI](#)
[KAIREI](#)
[CHIKYU](#)
[KAIMEI](#)
[SHINSEI MARU](#)
[HAKUHO MARU](#)

Information of the Submersibles

[KAIKO](#)
[SHINKAI 2000](#)
[SHINKAI 6500](#)
[DEEP TOW](#)
[HYPER-DOLPHIN](#)
[URASHIMA](#)
[YOKOSUKA DEEP TOW](#)
[6K Camera DEEP TOW](#)
[6K Sonar DEEP TOW](#)
[KM-ROV](#)
[POWER GRAB SAMPLER \(SHELL\)](#)
[POWER GRAB SAMPLER \(CLOW\)](#)
[BMS](#)

Go to a Cruise Information

Cruise ID:

Go to a Dive Information

Dive ID:

Copyright 2011 Japan Agency for Marine-Earth Science and Technology



JAMSTEC 国立研究開発法人
 海洋研究開発機構
 JAPAN AGENCY FOR MARINE EARTH SCIENCE AND TECHNOLOGY

SHINSEI MARU KS-17-J08C Bottle Sampling Water Chemical Analysis

Last Modified: 2020-11-10

[ReadMe](#) [Observation Data](#) [Data Format](#) [Quality Information](#)

Cruise ID: [KS-17-J08C](#)

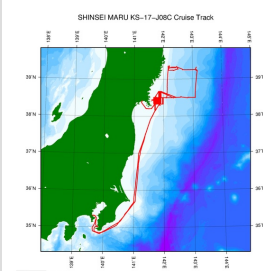
Bottle Sampling Water Chemical Analysis: Processed (PI)

Data Policy: [JAMSTEC](#)

Format Information

Column No.	Column Heading	Comments
1	Cruise	Cruise Label
2	Type	Station type
3	Station	Station name–Cast number
4	Year	Cast year
5	Month	Cast month
6	Day	Cast day
7	Hour	Cast time(hour)
8	Minute	Cast time(minute)
9	LATITUDE	Latitude
10	LONGITUDE	Longitude
11	Bot. depth	Reported depth to bottom.
12	Pressure [db]	Pressure
13	QF	Quality flags for CTD data
14	Depth [m]	Depth
15	Temp. [C]	Temperature
16	QF	Quality flags for CTD data
17	Salinity-SBE	CTD Salinity
18	QF	Quality flags for CTD data
19	Light transmission [%]	Light transmission from CTD
20	QF	Quality flags for CTD data
21	Salinity-Bottle	Bottle salinity
22	QF	Quality flags for water samples
23	Oxygen [umol/kg]	Oxygen
24	QF	Quality flags for water samples
25	Silicate [umol/kg]	Silicate
26	QF	Quality flags for water samples
27	Nitrate [umol/kg]	Nitrate
28	QF	Quality flags for water samples
29	Nitrite [umol/kg]	Nitrite
30	QF	Quality flags for water samples
31	Phosphate [umol/kg]	Phosphate
32	QF	Quality flags for water samples
33	NH4 [umol/kg]	Ammonium
34	QF	Quality flags for water samples
35	Chl.a-Wel [ug/l]	Chlorophyll a : Non-acidification method (Welschmeyer, 1994)
36	QF	Quality flags for water samples
37	Chl.a-Hol [ug/l]	Chlorophyll a : Acidification method (Holm-Hansen <i>et al.</i> , 1965)
38	QF	Quality flags for water samples
39	TA [umol/kg]	Total alkalinity
40	QF	Quality flags for water samples
41	DIC [umol/kg]	Dissolved Inorganic Carbon
42	QF	Quality flags for water samples
43	DOC [umol/kg]	Dissolved Organic Carbon
44	QF	Quality flags for water samples
45	LTA [%]	LTA
46	QF	Quality flags
47	TDN [umol/kg]	Total Dissolved Nitrogen
48	QF	Quality flags for water samples
49	18O	Oxygen isotope ratio of seawater
50	QF	Quality flags for water samples

Related Information



[Enlarge Image](#)

KS-17-J08C

Ship Name: SHINSEI MARU
Period: 2017-05-28 - 2017-06-15
Chief Scientist: Shuichi Watanabe (JAMSTEC)
Project Name: [Tohoku Ecosystem-Associated Marine Sciences (TEAMS)]
Proposal Researches on marine ecosystem dynamics in the Tsunami affected area off Sanriku
Title:

Update History

2020-11-10	An observation data was registered.
2018-05-10	An observation data was registered.
2018-03-31	An observation data was registered.

JAMSTEC
Site Policy
Privacy Policy
Application for Data and Samples
Data Policy

What's New
Update History
Feeds

Lists
Publication List
Amount of Public Info.

Data
Map Search
Data Tree
Detailed Search

Information of the Ships
NATSUSHIMA
KAIYO
YOKOSUKA
MIRAI
KAIREI
CHIKYU
KAIMEI
SHINSEI MARU
HAKUHO MARU

Information of the Submersibles
KAIKO
SHINKAI 2000
SHINKAI 6500
DEEP TOW
HYPER-DOLPHIN
URASHIMA
YOKOSUKA DEEP TOW
6K Camera DEEP TOW
6K Sonar DEEP TOW
KM-ROV
POWER GRAB
SAMPLER (SHELL)
POWER GRAB
SAMPLER (CLOW)
BMS

Go to a Cruise Information

Cruise ID:

Go to a Dive Information

Dive ID:

Copyright 2011 Japan Agency for Marine-Earth Science and Technology



SHINSEI MARU KS-17-J08C Bottle Sampling Water Chemical Analysis

Last Modified: 2020-11-10

[ReadMe](#) [Observation Data](#) [Data Format](#) [Quality Information](#)

Cruise ID: [KS-17-J08C](#)

Bottle Sampling Water Chemical Analysis: Processed (PI)

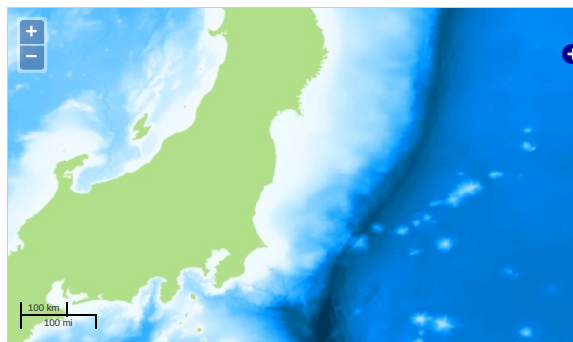
Data Policy: [JAMSTEC](#)

Observation Items: Temperature, Practical salinity, Transmittance, Dissolved oxygen, Silicate, Nitrate, Nitrite, Phosphate, Ammonia, Alkalinity, Dissolved Inorganic Carbon, Dissolved Organic Carbon, LTA, Total Dissolved Nitrogen, 18O

Science Keywords:

OCEANS > OCEAN CHEMISTRY > AMMONIA
OCEANS > OCEAN CHEMISTRY > INORGANIC CARBON
OCEANS > OCEAN CHEMISTRY > NITRATE
OCEANS > OCEAN CHEMISTRY > NUTRIENTS
OCEANS > OCEAN CHEMISTRY > OXYGEN
OCEANS > OCEAN CHEMISTRY > PHOSPHATE
OCEANS > OCEAN CHEMISTRY > SILICATE
OCEANS > OCEAN CHEMISTRY > SALINITY
OCEANS > OCEAN TEMPERATURE > WATER TEMPERATURE
OCEANS > SALINITY/DENSITY > SALINITY
OCEANS > OCEAN CHEMISTRY > ALKALINITY
OCEANS > OCEAN CHEMISTRY > CARBON
OCEANS > OCEAN CHEMISTRY > STABLE ISOTOPES

Observation Map



... Observation Line ... Navigation ... Observation, Dive Point, Hole

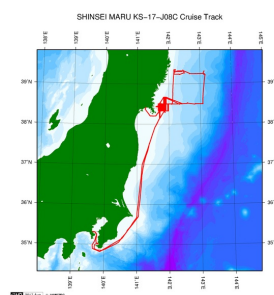
Imagery reproduced from ...

Data List

File names

☐ KS-17-J08C_bottle_data.xlsx

Related Information



[Enlarge Image](#)

KS-17-J08C

Ship Name: SHINSEI MARU

Period: 2017-05-28 - 2017-06-15

Chief Scientist: Shuichi Watanabe (JAMSTEC)

Project Name: [Tohoku Ecosystem-Associated Marine Sciences (TEAMS)]

Proposal Researches on marine ecosystem dynamics in the Tsunami affected area off Sanriku

Title:

Update History

2020-11-10	An observation data was registerd.
2018-05-10	An observation data was registerd.
2018-03-31	An observation data was registerd.

JAMSTEC
Site Policy
Privacy Policy
Application for Data and Samples
Data Policy
What's New
Update History

Lists
Publication List
Amount of Public Info.
Data
Map Search
Data Tree
Detailed Search

Information of the Ships
NATSUSHIMA
KAIYO
YOKOSUKA
MIRAI
KAIREI
CHIKYU
KAIMEI

Information of the Submersibles
KAIKO
SHINKAI 2000
SHINKAI 6500
DEEP TOW
HYPER-DOLPHIN
URASHIMA

Go to a Cruise Information

Cruise ID:

Go to a Dive Information

Dive ID:

Feeds

SHINSEI MARU
HAKUHO MARU

YOKOSUKA DEEP TOW
6K Camera DEEP TOW
6K Sonar DEEP TOW
KM-ROV
POWER GRAB SAMPLER
(SHELL)
POWER GRAB SAMPLER
(CLOW)
BMS

Copyright 2011 Japan Agency for Marine-Earth Science and
Technology



JAMSTEC 国立研究開発法人
海洋研究開発機構
JAPAN AGENCY FOR MARINE-EARTH SCIENCE AND TECHNOLOGY