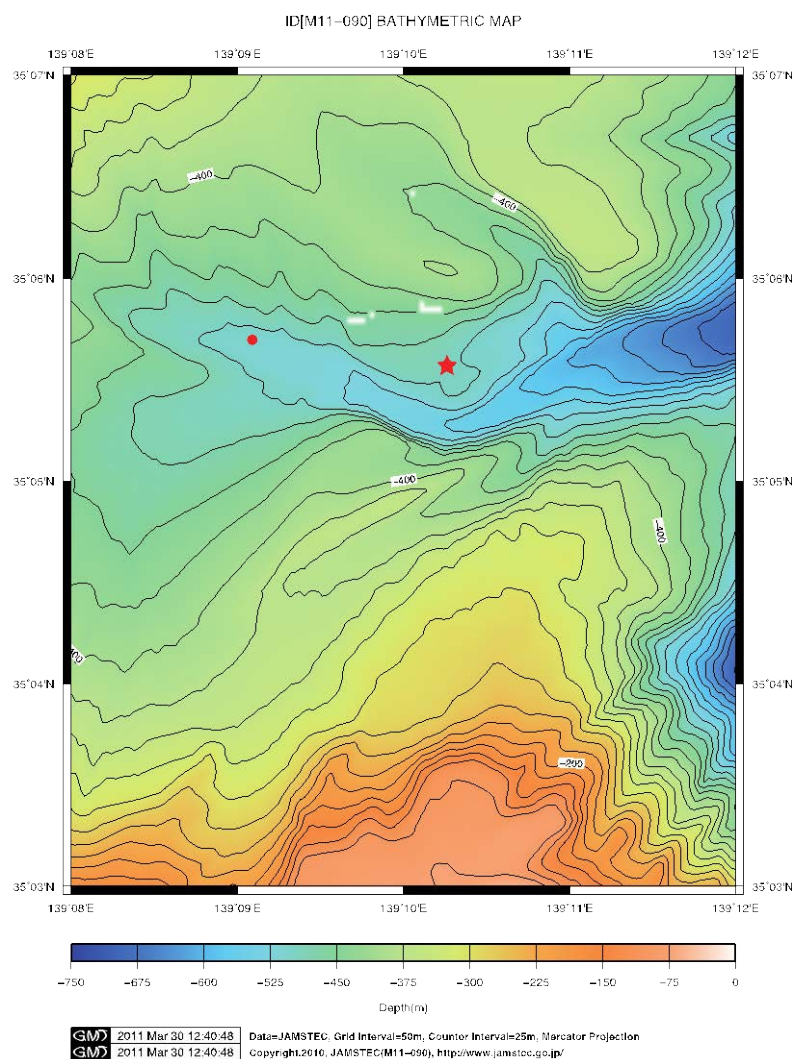


Cruise Summary

1. Cruise Information

- Cruise ID: NT12-15
- Name of vessel: R/V *Natsushima*/ROV *Hyper-Dolphin 3000*
- Title of the cruise: IMPACT0 (IMPlantation of Animal Carcasses for Time-series Observations)-2
- Chief scientist [Affiliation]: Yoshihiro FUJIWARA
[JAMSTEC]
- Representative of the Science Party [Affiliation]: Yoshihiro FUJIWARA
[JAMSTEC]
- Title of proposal: Implantation of animal carcasses for time-series observations
- Cruise period: June 21, 2012 – June 24, 2012
- Ports of call: from JAMSTEC port (Yokosuka) to JAMSTEC Port (Yokosuka)
- Research area: Sagami Bay
- Research map: Dive site is shown as ★.



2. Overview of the Observation

● Overview of the observation

To elucidate faunal succession and decomposition process of a whale carcass, an ROV diving research was conducted in Sagami Bay. A baby sperm whale (5 m in total length) was submerged at a depth of 500 m in the bay on June 8, 2012. More than 40% of the soft tissues were consumed within 2 weeks from the deployment. Most dominant consumers were eels and crustaceans from the ROV observations. For long-term observations and analyses, two time-lapse cameras and two sediment traps were deployed around the carcass. Additionally, 3D mapping around the whale was conducted.