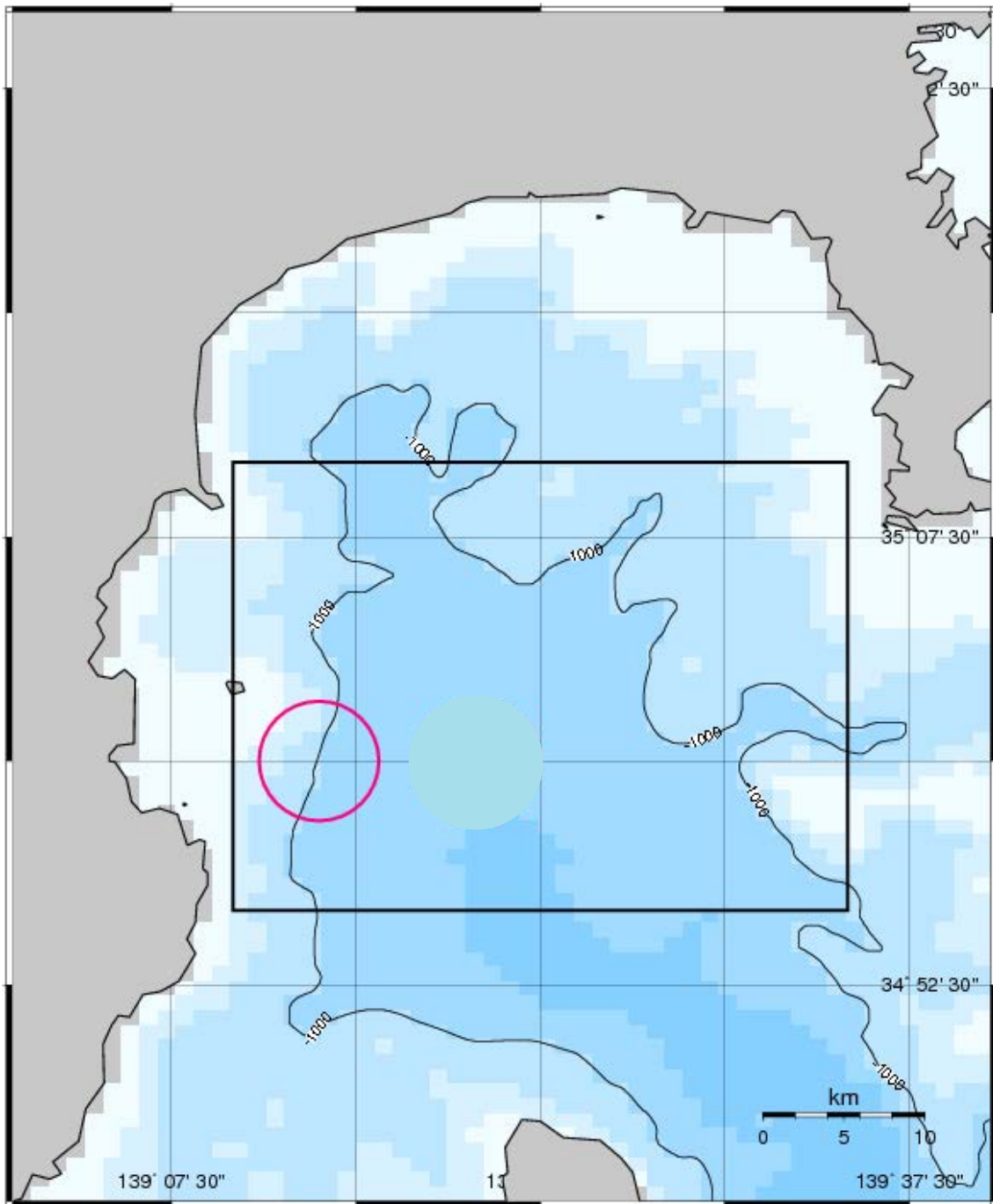


## Cruise Summary

### 1. Cruise Information

- Cruise ID KR12-05
- Name of vessel R/V KAIREI
- Title of the cruise
- Chief scientist [Affiliation] Kazumasa Oguri (JAMSTEC)
- Representative of the Science Party [Affiliation]
  - (1) Understanding three dimensional (depth, width and time) biogeochemical features at sediment-water interface in deep-sea: in situ observations using with a two dimensional O<sub>2</sub>-pH optode and microelectrodes., Kazumasa Oguri (JAMSTEC)
  - (2) Search for settlement and metamorphosis factor for *Alaysia* sp. larvae., Mitsuru Jimbo (Kitasato U.)
  - (3) Interactive approaches by marine biologists and paleontologists for understanding methane-seep community structure and its taphonomy, Takami Nobuhara (Shizuoka U.)
- Cruise period
- Cruise period: Feb.20,2012 – Feb.25,2012
- Ports of call: Yokohama Port – Shimizu Port
- Research area: Off Hatsushima, Sagami Bay



## 2. Overview of the Observation

- Overview of the observation

(1) Recovery of the planar O<sub>2</sub> optode system mounted on the lander system and the extension cable.

(2) Collection of *Calyptogena* spp. and *Alaysia* sp. to investigate the settlement and metamorphosis factor for *Alaysia* sp. larvae.

(3) *In situ* artificial burial experiments for *Calyptogena* clams and recognition of dead shell preservation (fragmentation, abrasion, and size-distribution)