

Cruise Summary

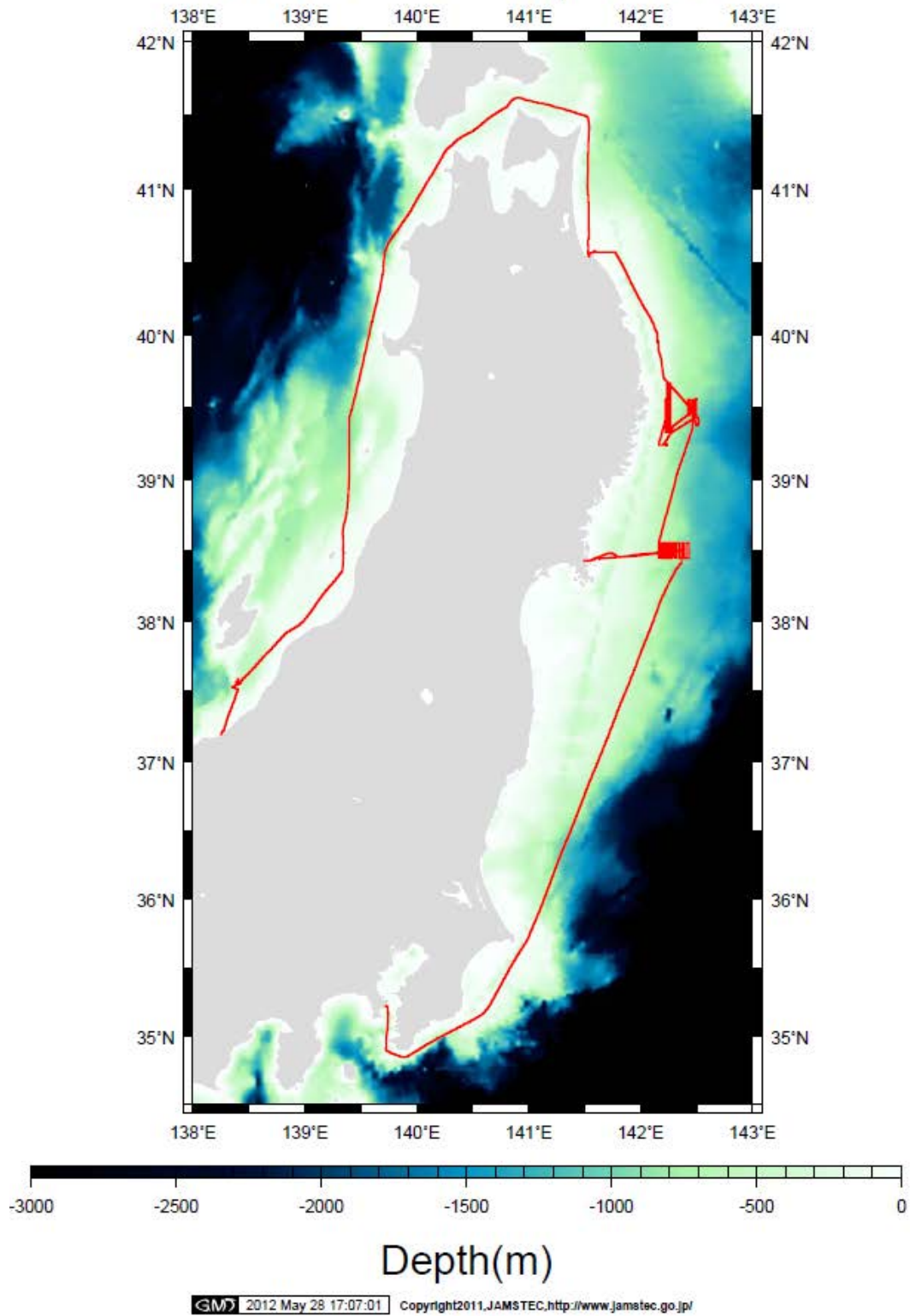
1. Cruise Information

- Cruise ID: NT12-12
- Name of vessel: R/V Natsushima
- Title of the cruise: Off Sendai, off Sanriku, Cruise
- Title of proposal (If there are no scientific proposals, it is not necessary to fill this section for exception)

Studies on biodiversity and biogeochemical properties on the sediment surface across oxygen minimum zone in off Tohoku, influenced by the huge earthquake.

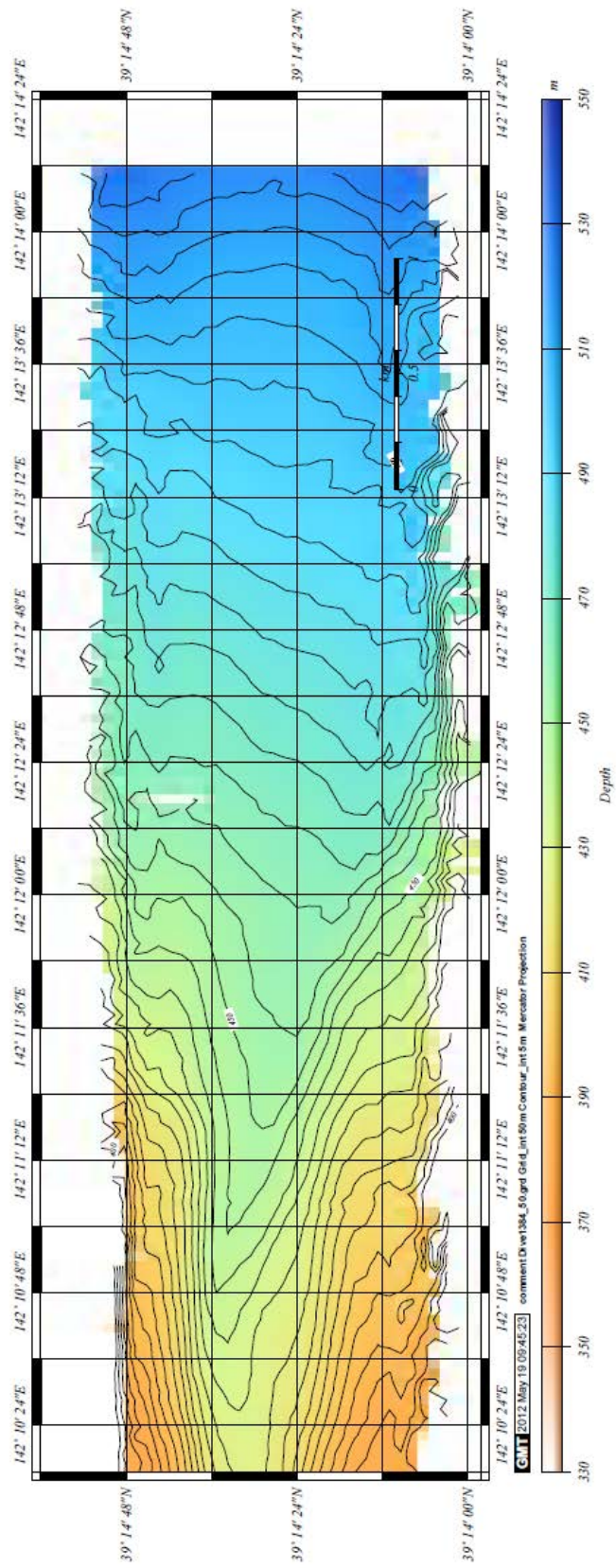
- Chief scientist Kazumasa Oguri (JAMSTEC)
- Representative of the Science Party [Affiliation] Kazumasa Oguri (JAMSTEC)
- Cruise period: May.14,2012 –May.23,2012
- Ports of call: Kurihama Port – Naoetsu Port
- Research area: Off Sendai and off Sanriku.
- Research Map

NT12-12 ShipTrack



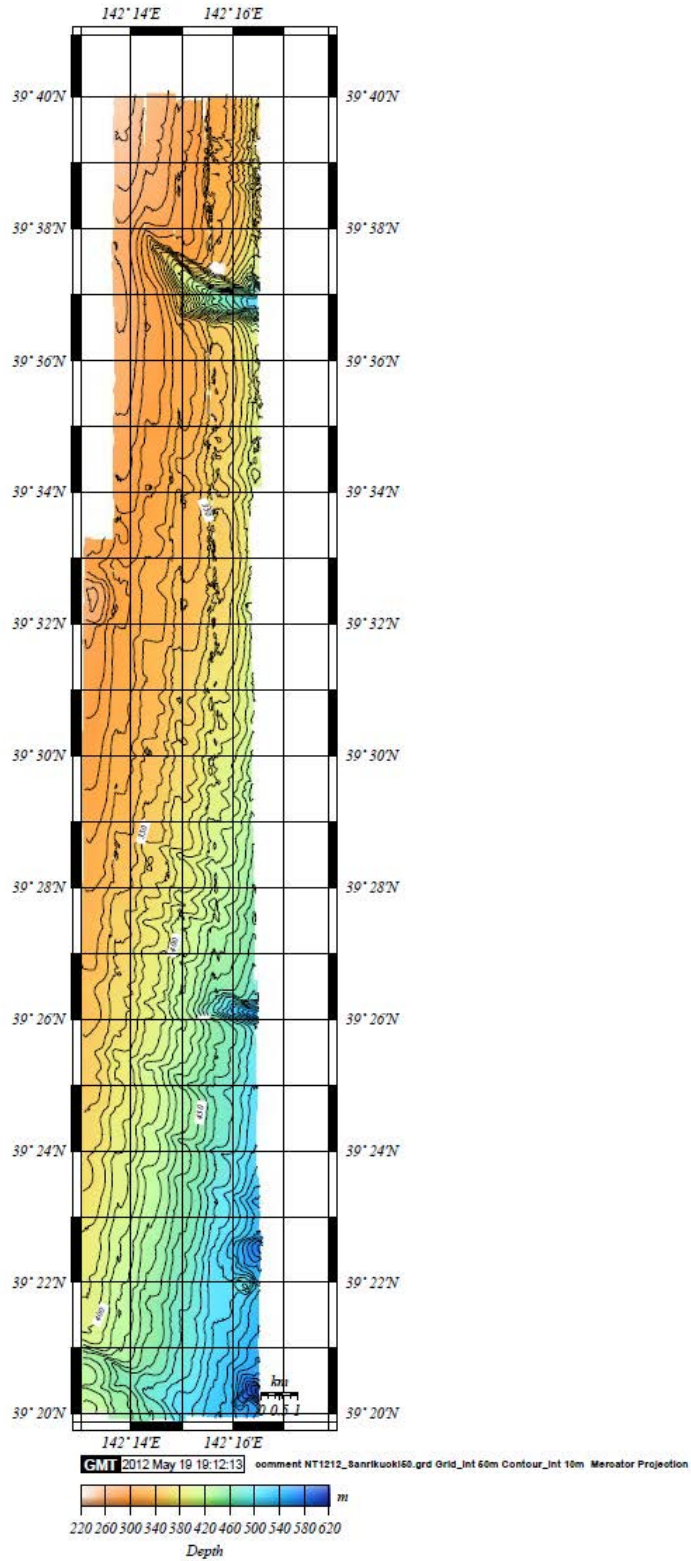
「Fig. 1-1. Ship track.」

Dive1384_50_cl5A3.ps

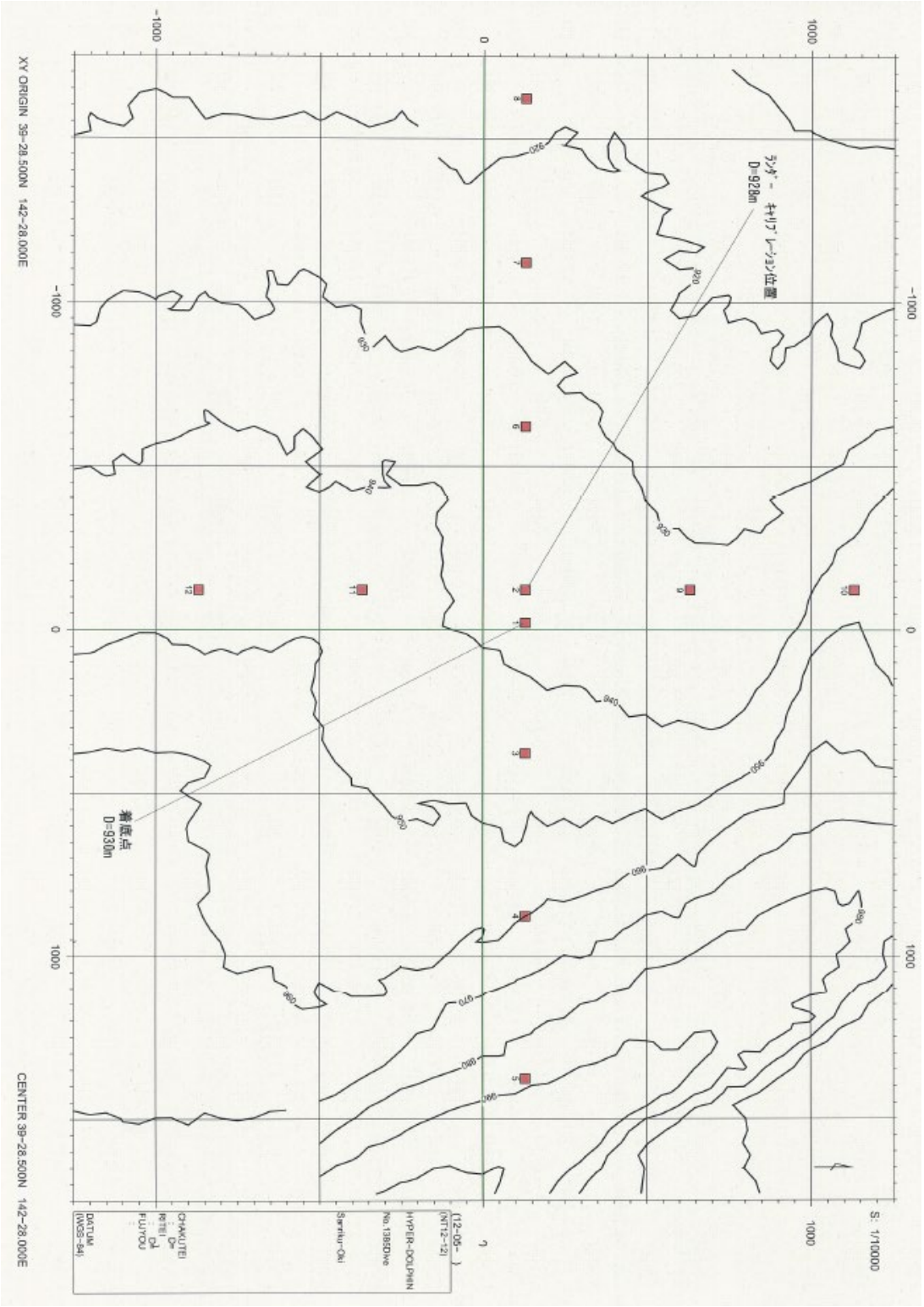


「Fig 1-3. Map of off Ohtsuchi area.」

NT1212_Sanrikuoki50_cl10A3.ps



「Fig. 1-4. Map of off Sanriku area.」



2. Overview of the Observation

- Overview of the observation

O2 optode deployments at off Sendai and off Sanriku.

Observations of sea floor, distributions of biology and the diversity, and artificial garbage.

Structure analyses of sediment cores taken from off Sendai and Sanriku.

Analysis of benthic forams and other meibenthic organisms in sediments.

Collection of garbage and the organisms attached on the garbage.