

Cruise Summary

1. Cruise Information

(1) **Cruise ID:** KS-23-2

(2) **Vessel:** R/V SHINSEI MARU

(3) **Cruise Title**

Distribution and transport processes of terrestrial materials in the continental shelf region off Joban and Kashima

(4) **Chief Scientist**

Sachihiko Itoh (AORI)

(5) **Representative of the Science Party**

S22-29 Sachihiko Itoh (AORI)

(6) **Research Titles**

S22-29 Distributino and transport processes of terrestrial materials in the continental shelf region off Joban and Kashima

(7) **Cruise Period**

2023/01/14 - 2023/01/20

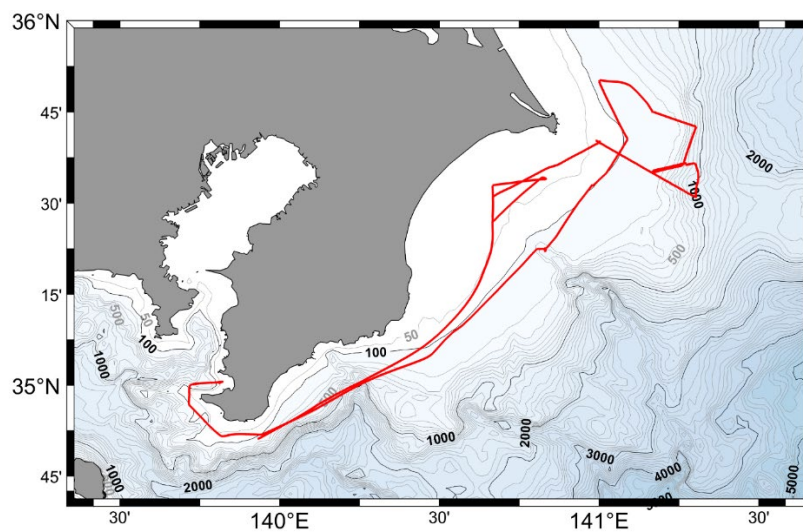
(8) **Ports of departure/call/arrival**

Yokosuka - Yokosuka

(9) **Research Area**

Coastal areas off Joban, Kashima and Boso

(10) **Cruise Track**



Track chart

2. Overview of the Observation

The Shinsei Maru cruise KS-23-2 was planned to elucidate the actual distribution and mixing of water masses, the exchange of nutrients between sediments and the water column, and the distribution of fish fauna corresponding to the oceanic structure in the offshore areas of Boso and Joban where river waters such as Tone River, Kuroshio and Oyashio interact with one another.

The R/V Shinsei Maru departed Yokosuka Port at 14:00 on January 14, 2023. Because of adverse sea conditions off the coast of Joban and Boso, the observation area, the Shinsei Maru was stayed in Tateyama Bay on January 14, and headed for the observation area on the following day, January 15. At this point, sea conditions in the Outer Boso region were poor and we expected to be able to conduct observations only for a limited time, so we decided to skip the observation line K off Kashima, which we had originally planned, and concentrate on observations off Boso. After that, we conducted CTD, VMP, and multiple corers at 8 stations, mainly along the coast, UCTD observations along observation line B, tests of the new VMP winch and TurboMAP, and towed ADCP V-fin, and returned to Yokosuka Port at 10:00 on 1/20.