

Cruise Summary

1. Cruise Information

(1) **Cruise ID:** KS-21-3

(2) **Vessel:** R/V SHINSEI MARU

(3) **Cruise Title**

Structure, material exchange and production processes of submesoscale phenomena in the off Tohoku frontal areas during a mixing period

(4) **Chief Scientist**

Sachihiko Itoh (AORI)

(5) **Representative of the Science Party**

S20-31 Sachihiko Itoh (AORI)

(6) **Research Titles**

S20-31 Structure, material exchange and production processes of submesoscale phenomena in the off Tohoku frontal areas during a mixing period

(7) **Cruise Period**

2021/03/23 - 2021/03/30

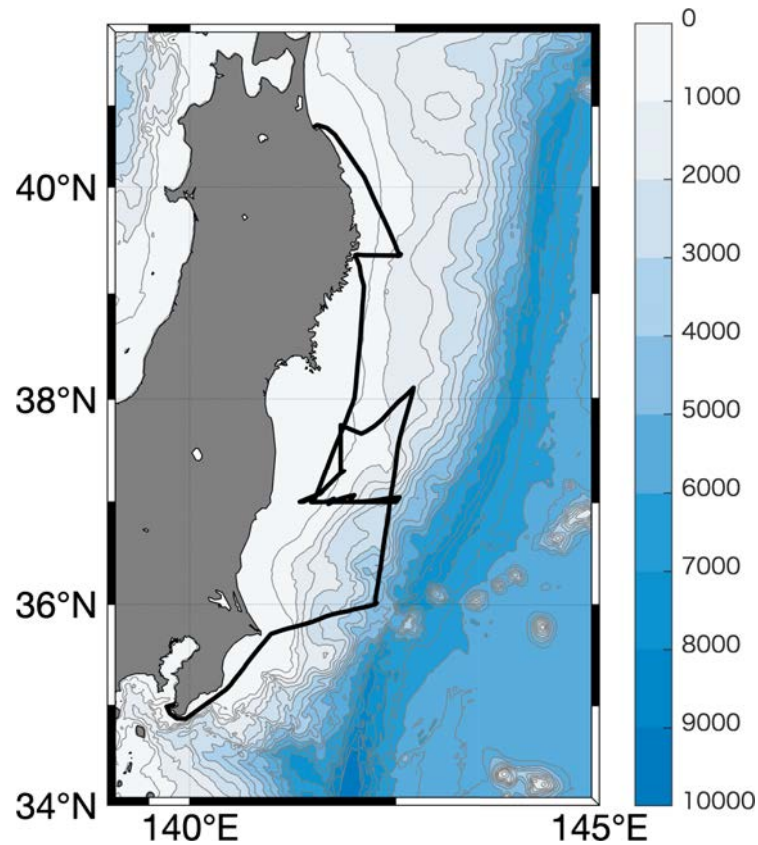
(8) **Ports of departure/call/arrival**

Hachinohe - Yokosuka

(9) **Research Area**

Coastal areas off Tohoku

(10) Cruise Track



2. Overview of the Observation

R/V Shinsei maru departed the port of Hachinohe at 14:00 JST on March 23, 2021. The ship first arrived at the offshore end of Line A off Otsuchi Bay around mid night of March 24. CTD and VMP observations were conducted at three stations along Line A, B01 at 38N and C01 at 37. Then, Underway CTD observation was conducted eastward along Line C (37N). Two drifters were deployed around the front, and then cycles of U-VMP & CTD/LADCP/VMP observations started. The cycle consisted of 6-hour U-VMP and 1 set of CTD/LADCP/VMP observations, After completing 9 cycles, the ship moved to the final station D01 and conducted CTD/LADCP/VMP.