

Cruise Summary

Cruise Information

Cruise ID : NT10-19 Leg.1

Name of Vessel: R/V Natsushima & ROV Hyper-Dolphin

Title of the Cruise: “Estimation of hydrothermal activities using growth line on bivalve shells”, “Investigation of parasitic eukaryotes associated with chemosynthetic animals”

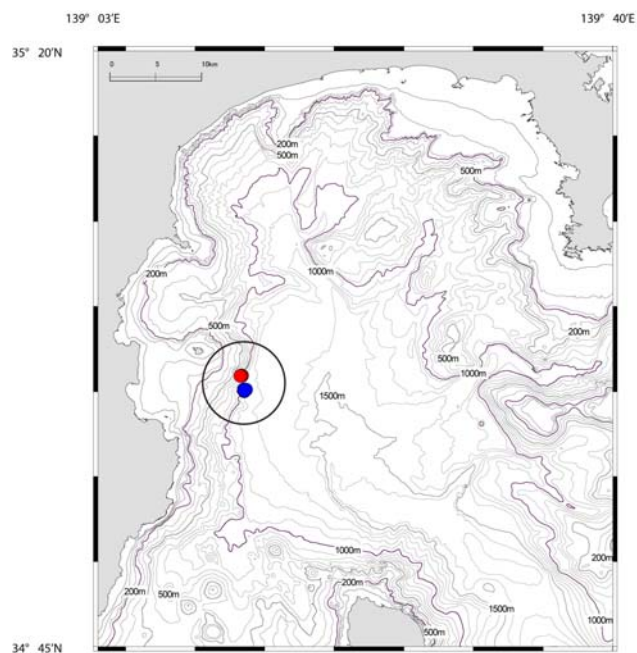
Chief Scientist: Hiromi WATANABE (JAMSTEC)

Cruise Period : 2010.10.21 – 2010.10.24

Port of Call : JAMSTEC

Research Area : Off Hatsushima Island site, Sagami Bay

Research Map



Overview of the Observation

Two dives of ROV Hyper-Dolphin were carried out during this cruise to investigate chemosynthetic bivalves in the methane seeps. To estimate methane seep activity, we are carrying out in situ rearing experiment, which will be completed in January 2011. On the other hand, to investigate eukaryotic parasites, we collected some bivalves and sediments in the methane seep site.