

## URASHIMA URSM 00150 Side Scan Sonar

Last Modified: 2016-10-05

### ReadMe

Dive No.: [URSM 00150](#)

Side Scan Sonar: Raw

Data Policy: [JAMSTEC](#)

Observation Items: Backscatter intensity

Science Keywords:

SOLID EARTH > GEOMORPHOLOGY

### Cruise Report

[http://www.godac.jamstec.go.jp/catalog/data/doc\\_catalog/media/YK12-16\\_all.pdf](http://www.godac.jamstec.go.jp/catalog/data/doc_catalog/media/YK12-16_all.pdf)

#### For Using Data

##### Principal Investigator

Data Management Office

##### Use Constraints

See [Terms and Conditions](#) about constrain of use.

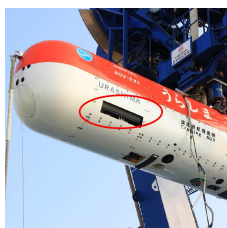
##### Data Citation

See [Terms and Conditions](#) about data citation.

### Instrument

Instrument:

Side-scan sonar on the autonomous underwater vehicle "URASHIMA".



### Overview

This data is a reflection intensity data measured by the side-scan sonar. The side-scan sonar, by transmitting in a direction perpendicular to the traveling direction of the vehicle body from the wave transmitter of the aircraft acoustic pulses having directivity of the sector, and the backscattered waves scattered and reflected by objects submarine on the seabed or it is obtained by reception, to create a sound image of the seabed by the sound pressure intensity.

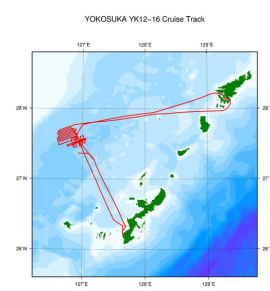
### About this data

We have no plan to process the data.

Please refer to "Application" if you wish to use the raw data.

### Related Information

☒ Cruise Data ☐ Dive Data



 [Enlarge Image](#)

#### YK12-16

Ship Name: YOKOSUKA

Period: 2012-09-24 - 2012-10-02

Chief Scientist: Hidenori Kumagai (JAMSTEC)

Proposal Distribution estimate of Hydrothermalism in Mid-Okinawa Trough

Title:

### Update History

Update Date	Update Content
2016-10-05	An observation data was registerd.

JAMSTEC  
Site Policy  
Privacy Policy  
Application for Data and Samples  
Data Policy  
What's New  
Update History  
Feeds

Lists  
Publication List  
Amount of Public Info.  
Data  
Map Search  
Data Tree  
Detailed Search

Information of the Ships  
NATSUSHIMA  
KAIYO  
YOKOSUKA  
MIRAI  
KAIREI  
CHIKYU  
KAIMEI  
SHINSEI MARU  
HAKUHO MARU

Information of the Submersibles  
KAIKO  
SHINKAI 2000  
SHINKAI 6500  
DEEP TOW  
HYPER-DOLPHIN  
URASHIMA  
YOKOSUKA DEEP TOW  
6K Camera DEEP TOW  
6K Sonar DEEP TOW  
KM-ROV  
POWER GRAB SAMPLER (SHELL)  
POWER GRAB SAMPLER

#### Go to a Cruise Information

Cruise ID:

#### Go to a Dive Information

Dive ID:

