

## YOKOSUKA DEEP TOW YKDT 00095 Submersible Conductivity-Temperature-Depth Profiler (CTD)

Last Modified: 2021-06-01

[ReadMe](#) [Observation Data](#) [Data Format](#)

Dive No.: **YKDT 00095**

Submersible Conductivity-Temperature-Depth Profiler (CTD): Processed (DMO)-QCed

Data Policy: [JAMSTEC](#)

Observation Items: Pressure, Temperature

Science Keywords:

OCEANS > OCEAN TEMPERATURE > WATER TEMPERATURE

Cruise Report

[http://www.godac.jamstec.go.jp/catalog/data/doc\\_catalog/media/YK11-E04\\_leg1\\_all.pdf](http://www.godac.jamstec.go.jp/catalog/data/doc_catalog/media/YK11-E04_leg1_all.pdf)

### For Using Data

#### Principal Investigator

Data Management Office

#### Use Constraints

See [Terms and Conditions](#) about constrain of use.

#### Data Citation

See [Terms and Conditions](#) about data citation.

### Instrument

Instrument:

CTD measurement system equipped  
on the Deep Ocean Floor Survey  
System "YOKOSUKA DEEP TOW"



### Overview

Deep Ocean Floor Survey System YOKOSUKA DEEP TOW is supported by R/V YOKOSUKA as the mother ship. YOKOSUKA DEEP TOW is designed to operate to a maximum depth of 6000 meters.

YOKOSUKA DEEP TOW measures pressure, water temperature and conductivity at 1Hz by an SBE 49 FastCAT CTD sensor manufactured by Sea-Bird Electronics, Inc. SBE 49 FastCAT CTD sensor facing horizontal leftward is installed on the left side of YOKOSUKA DEEP TOW, and its seawater intake is positioned approximately 1.2m above the bottom of YOKOSUKA DEEP TOW. This CTD sensor is used for monitoring the depth of YOKOSUKA DEEP TOW. The CTD sensor has not been calibrated after the installation on YOKOSUKA DEEP TOW.

The internal clock of the CTD sensor is synchronized with the clock of control PC before the dive. The clock of control PC is synchronized with the NTP (Network Time Protocol) server on the mother ship.

### Specifications

Model	Sensor	Measurement range	Accuracy	Stability per year	Resolution
SBE 49 FastCAT	Temperature	-5 ~ +35 °C	±0.002 °C	±0.0024 °C	0.0001 °C
	Conductivity	0 ~ 9 S/m	±0.0003 S/m	±0.0036 S/m	0.00005 S/m
	Pressure	0 ~ 7000 m	±7 m	±3.5 m	0.14 m

### Note

The abnormal value of salinity were substituted with missing value '-999'.

• Time: 06:54-14:40

### Submersible vehicle positioning data

The position of the submersible vehicle relative to that of the mother ship is determined by SSBL (Super Short Base Line) method of the acoustic underwater positioning which consists of the transponder mounted on the submersible vehicle and the receiver array mounted on the bottom of the mother ship.

In SSBL method, the position of the submersible vehicle relative to that of the mother ship is determined by the combination of the direction obtained from the phase difference measured from the angle of received acoustic waves at the receiver array and the distance calculated from the time of the acoustic wave propagation. The positioning accuracy relies on the line of sight distance and angle between the mother ship and the submersible vehicle, and rolling and pitching of the mother ship, etc. SSBL method is easy to operate because of no requirement to deploy seafloor baseline transponder(s) although the positioning accuracy of SSBL method is a little lower than that of LBL (Long Base Line) method.

Vertical sound velocity profile is required for the accurate distance to calculate from the time of the acoustic wave propagation. Therefore, the vertical temperature profiles of every sea regions were measured by using XBT etc.

The position of the submersible vehicle is determined by adding the relative distance between the mother ship and the submersible vehicle to GPS position of the mother ship. The conversion of the relative distance between the mother ship and the submersible vehicle to the coordinates of latitude and longitude uses the simplified formula with the area-dependent coefficients of every 30 degrees of latitude and longitude provided by Hydrographic and Oceanographic Department, Japan Coast Guard.

### Published data

The data available on this web site are CTD data, latitude, longitude and roll-pitch-heading angles obtained by YOKOSUKA DEEP TOW every second.

The data of pressure, temperature, and salinity is visually checked to find noises, and the noise is replaced with missing values if it obviously seems abnormal.

The positioning data of YOKOSUKA DEEP TOW is manually eliminated the noise of the moving at higher speed than 1 knot, which is the maximum operation speed of YOKOSUKA DEEP TOW, and is compensated by linear interpolation.

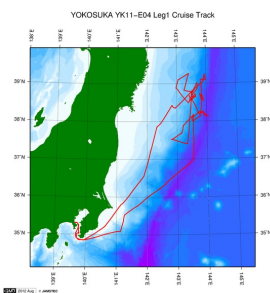
The number of significant digits of data is determined as the following list, by considering the accuracy of the sensors.

Data	Raw	On this web site
Pressure	0.001 [dbar]	0.1 [dbar]
Temperature	0.0001 [°C]	0.01 [°C]
Salinity	0.0001 [PSU]	0.01 [PSU]

## Related Information

☒ Cruise Data

☐ Dive Data



### YK11-E04 Leg1

Ship Name: YOKOSUKA

Period: 2011-06-02 - 2011-06-12

Chief Scientist: Katsunori Fujikura (JAMSTEC)

Proposal Impact by the huge earthquake on marine ecosystem including environment, chemical,  
Title: geology and geophysics in Off Sanriku area

## Update History

2021-06-01

An observation data was registerd.

### JAMSTEC

[Site Policy](#)

[Privacy Policy](#)

[Application for Data and Samples](#)

[Data Policy](#)

#### What's New

[Update History](#)

[Feeds](#)

### Lists

[Publication List](#)

[Amount of Public Info.](#)

### Data

[Map Search](#)

[Data Tree](#)

[Detailed Search](#)

### Information of the Ships

NATSUSHIMA

KAIYO

YOKOSUKA

MIRAI

KAIREI

CHIKYU

KAIMEI

SHINSEI MARU

HAKUHO MARU

### Information of the Submersibles

KAIKO

SHINKAI 2000

SHINKAI 6500

DEEP TOW

HYPER-DOLPHIN

URASHIMA

YOKOSUKA DEEP TOW

6K Camera DEEP TOW

6K Sonar DEEP TOW

KM-ROV

POWER GRAB SAMPLER

(SHELL)

POWER GRAB SAMPLER

(CLOW)

BMS

### Go to a Cruise Information

Cruise ID:

Go

### Go to a Dive Information

Dive ID:

Go

Copyright 2011 Japan Agency for Marine-Earth Science and Technology



**JAMSTEC**

国立研究開発法人  
海洋研究開発機構  
JAPAN AGENCY FOR MARINE-EARTH SCIENCE AND TECHNOLOGY

## YOKOSUKA DEEP TOW YKDT 00095 Submersible Conductivity-Temperature-Depth Profiler (CTD)

Last Modified: 2021-06-01

[ReadMe](#) [Observation Data](#) [Data Format](#)

Dive No.: **YKDT 00095**

Submersible Conductivity-Temperature-Depth Profiler (CTD): Processed (DMO)-QCed

Data Policy: [JAMSTEC](#)

### Submersible CTD Qced

Header part

No.	Column	Item	Format	Remarks
1	1	Header ID	a1	fixed as '#'
2	3 - 37	Submersible vehicle	a35	e.g. YOKOSUKA-DEEP-TOW / KM-ROV
3	39 - 48	Data ID	a10	CTD
4	50 - 70	Cruise ID	a21	e.g. MRYX-XX(_legx)
5	78 - 81	Dive number	a4	

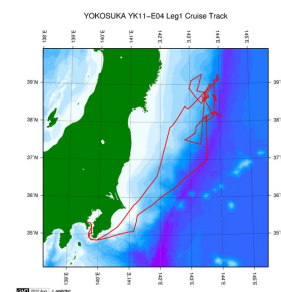
Data part

No.	Column	Item	Unit	Format	Remarks
1	1 - 8	Date	-	i8	YYYYMMDD (LST)
2	10 - 15	Time	-	i6	hhmmss (LST)
3	17 - 26	Latitude	degree	f10.5	No sign for the northern hemisphere. Negative for the southern hemisphere.
4	28 - 37	Longitude	degree	f10.5	No sign for the eastern hemisphere. Negative for the western hemisphere.
5	39 - 48	Pressure	dbar	f10.1	
6	50 - 59	Temperature	deg-C	f10.2	ITS-90
7	61 - 70	Salinity	PSU	f10.2	PSS-78
8	72 - 81	Dissolved oxygen	ml/l	f10.1	
9	83 - 92	Altitude	m	f10.1	
10	94 - 103	Vehicle roll	degree	f10.1	
11	105 - 114	Vehicle pitch	degree	f10.1	
12	116 - 125	Vehicle heading	degree	f10.1	

Missing value is presented by '-999'.

### Related Information

☒ Cruise Data ☐ Dive Data



[Enlarge Image](#)

#### YK11-E04 Leg1

Ship Name: YOKOSUKA

Period: 2011-06-02 - 2011-06-12

Chief Scientist: Katsunori Fujikura (JAMSTEC)

Proposal Impact by the huge earthquake on marine ecosystem including environment, chemical, geology and geophysics in Off Sanriku area

### Update History

2021-06-01 An observation data was registered.

#### JAMSTEC

[Site Policy](#)  
[Privacy Policy](#)  
[Application for Data and Samples](#)  
[Data Policy](#)

**What's New**  
[Update History](#)  
[Feeds](#)

#### Lists

[Publication List](#)  
[Amount of Public Info.](#)

#### Data

[Map Search](#)  
[Data Tree](#)  
[Detailed Search](#)

#### Information of the Ships

NATSUSHIMA  
KAIYO  
YOKOSUKA  
MIRAI  
KAIREI  
CHIKYU  
KAIMEI  
SHINSEI MARU  
HAKUHO MARU

#### Information of the Submersibles

KAIKO  
SHINKAI 2000  
SHINKAI 6500  
DEEP TOW  
HYPER-DOLPHIN  
URASHIMA  
YOKOSUKA DEEP TOW  
6K Camera DEEP TOW  
6K Sonar DEEP TOW  
KM-ROV  
POWER GRAB SAMPLER (SHELL)  
POWER GRAB SAMPLER (CLOW)  
BMS

#### Go to a Cruise Information

Cruise ID:

#### Go to a Dive Information

Dive ID:

## YOKOSUKA DEEP TOW YKDT 00095 Submersible Conductivity-Temperature-Depth Profiler (CTD)

Last Modified: 2021-06-01

[ReadMe](#) [Observation Data](#) [Data Format](#)

Dive No.: **YKDT 00095**

Submersible Conductivity-Temperature-Depth Profiler (CTD): Processed (DMO)-QCed

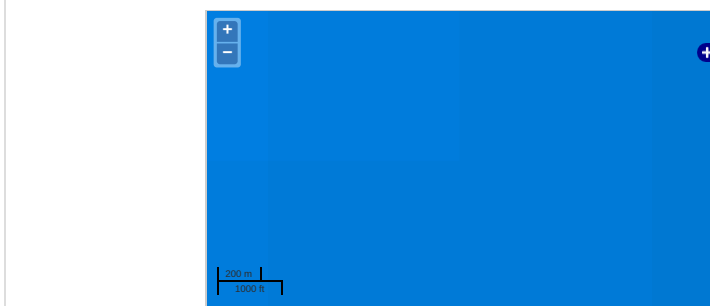
Data Policy: [JAMSTEC](#)

Observation Items: Pressure, Temperature

Science Keywords:

OCEANS > OCEAN > WATER  
TEMPERATURE TEMPERATURE

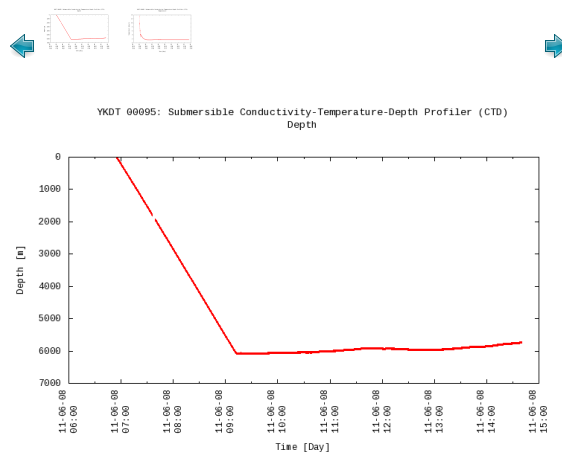
### Observation Map



— ... Observation Line — ... Navigation ● ... Observation, Dive Point, Hole

Imagery reproduced from ...

### Figures



### Data List

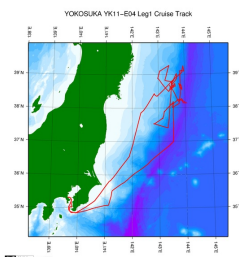
[Add to Basket](#)

File names

☐ YKDT\_00095.txt

### Related Information

[Cruise Data](#) [Dive Data](#)



[Enlarge Image](#)

#### YK11-E04 Leg1

Ship Name: YOKOSUKA

Period: 2011-06-02 - 2011-06-12

Chief Scientist: Katsunori Fujikura (JAMSTEC)

Proposal Impact by the huge earthquake on marine ecosystem including environment, chemical,

Title: geology and geophysics in Off Sanriku area

### Update History

2021-06-01 An observation data was registered.

[Samples](#)

[Data Policy](#)

[What's New](#)

[Update History](#)

[Feeds](#)

[Data](#)

[Map Search](#)

[Data Tree](#)

[Detailed Search](#)

[MIRAI](#)

[KAIREI](#)

[CHIKYU](#)

[KAIMEI](#)

[SHINSEI MARU](#)

[HAKUHO MARU](#)

[SHINKAI 6500](#)

[DEEP TOW](#)

[HYPER-DOLPHIN](#)

[URASHIMA](#)

[YOKOSUKA DEEP TOW](#)

[6K Camera DEEP TOW](#)

[6K Sonar DEEP TOW](#)

[KM-ROV](#)

[POWER GRAB SAMPLER](#)

[\(SHELL\)](#)

[POWER GRAB SAMPLER](#)

[\(CLOW\)](#)

[BMS](#)

[Go to a Dive Information](#)

Dive ID:

Go

Copyright 2011 Japan Agency for Marine-Earth Science and Technology



**JAMSTEC**

国立研究開発法人  
海洋研究開発機構

JAPAN AGENCY FOR MARINE-EARTH SCIENCE AND TECHNOLOGY